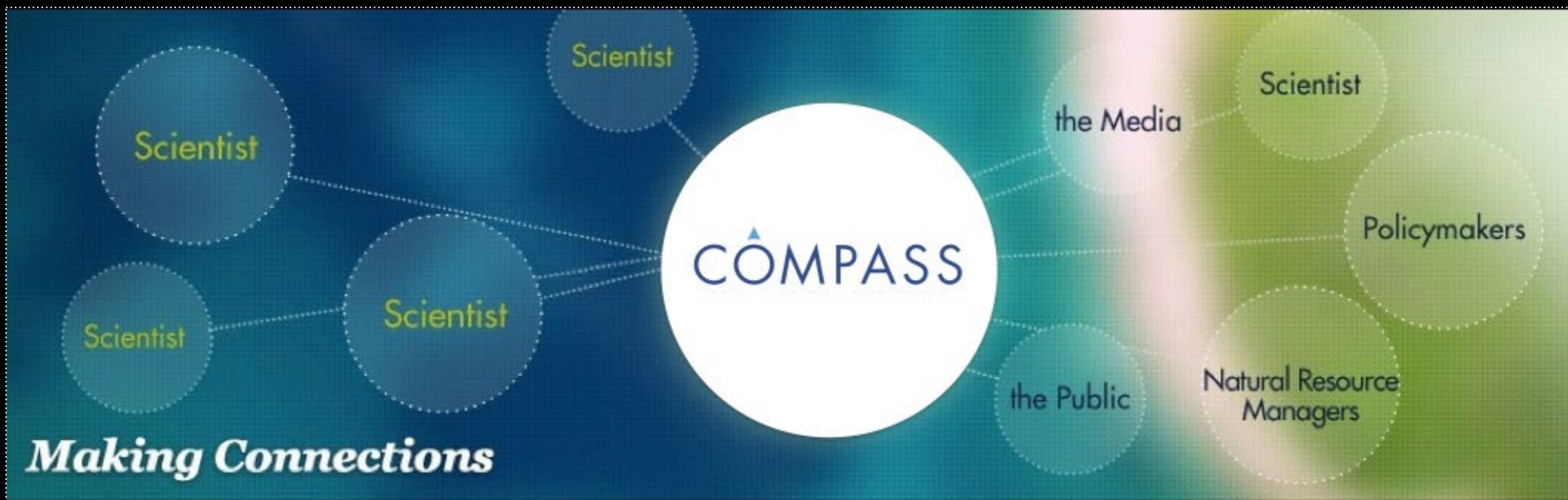


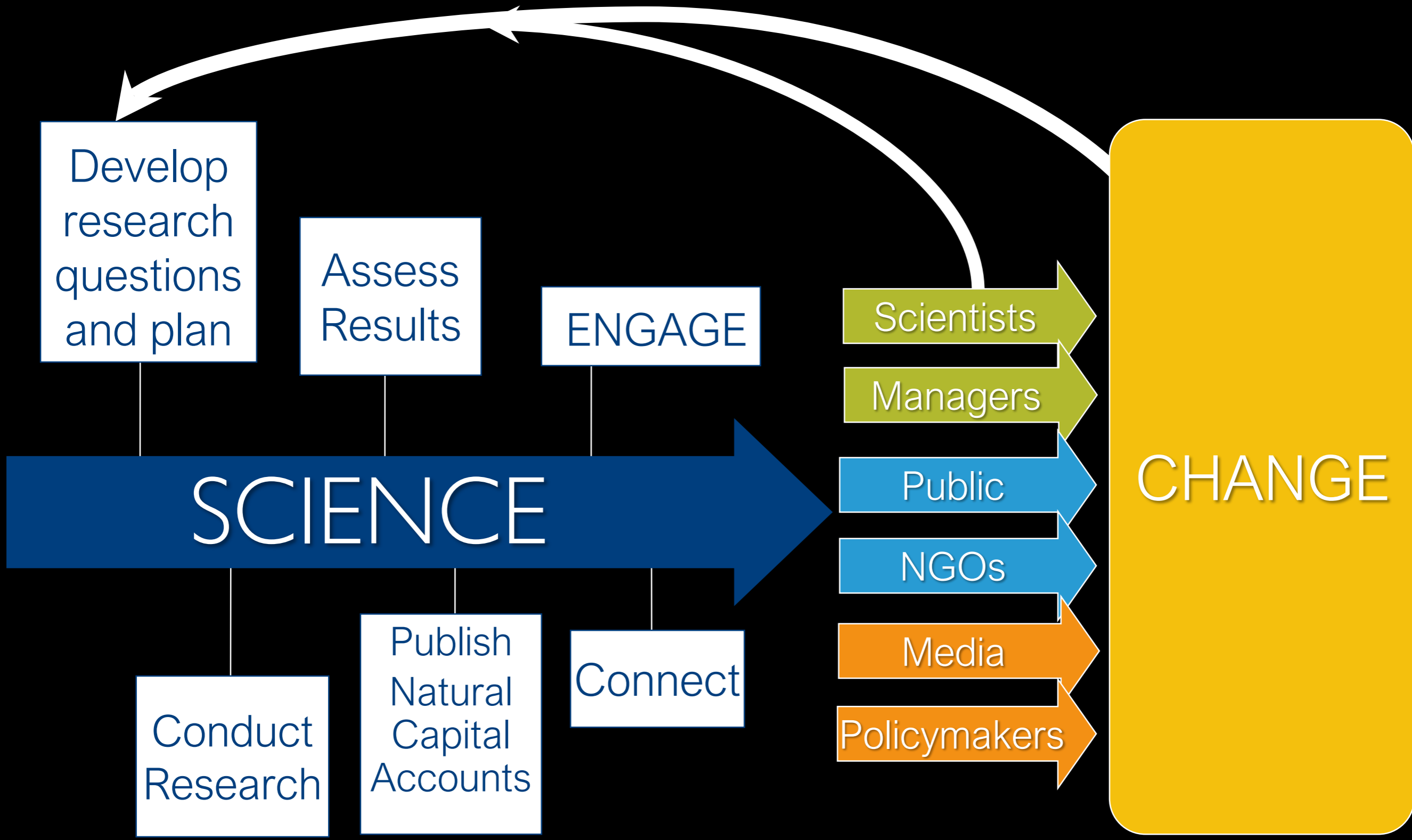


*Natural capital
accounting for policy*

Stephen Posner
December 5, 2018
COMPASS



Helping scientists find their voice.
Bringing science into the conversation.



Develop research questions and plan

Assess Results

ENGAGE

SCIENCE

Conduct Research

Publish Natural Capital Accounts

Connect

Scientists

Managers

Public

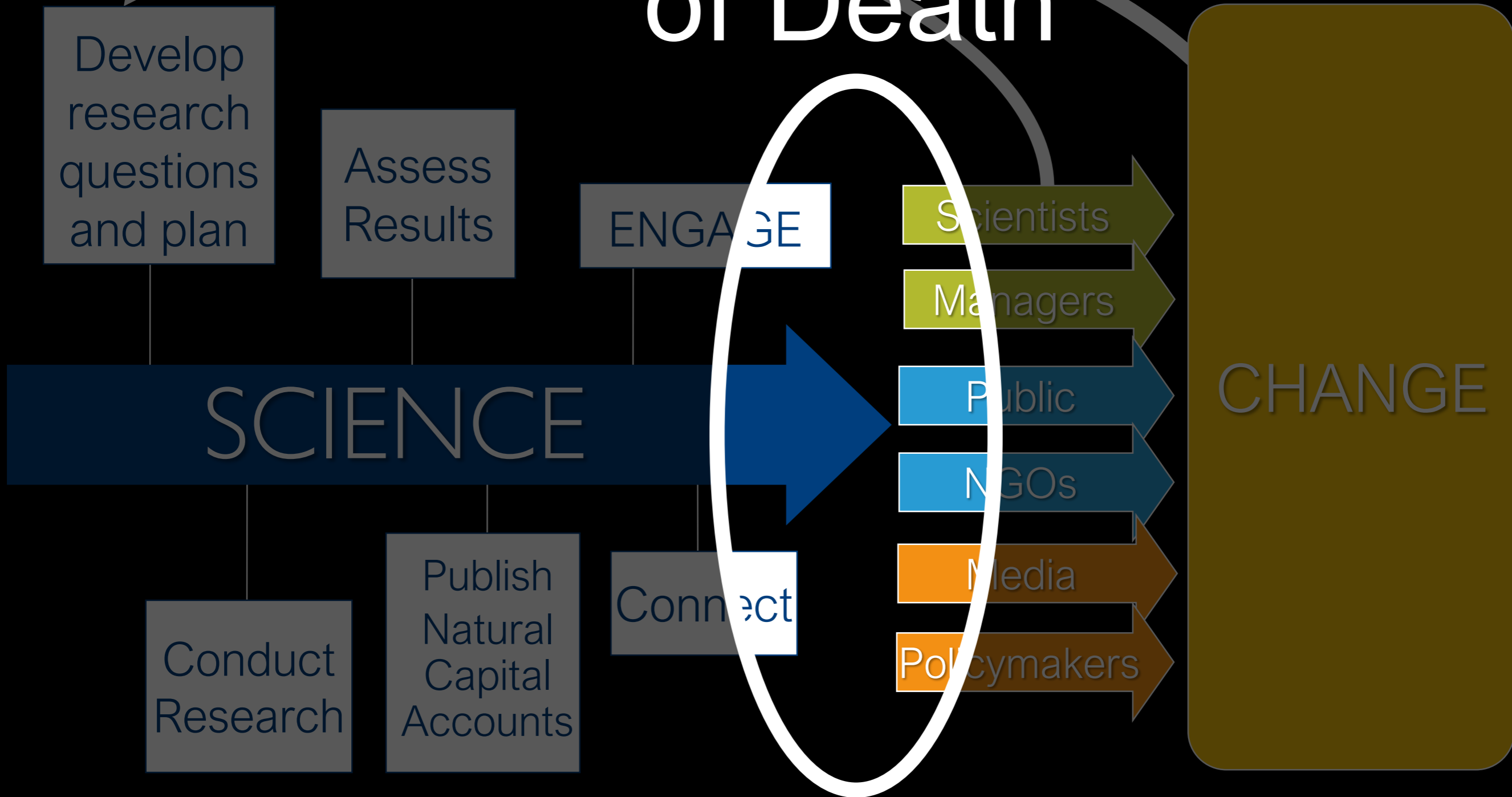
NGOs

Media

Policymakers

CHANGE

The Valley of Death





NCA work must shift to be *decision-centered*

From...

To...

Technical focus

Decision focus

Supply side

Demand side

Change 1 policy or plan

Enable policy discourse

Experimental

Mandated

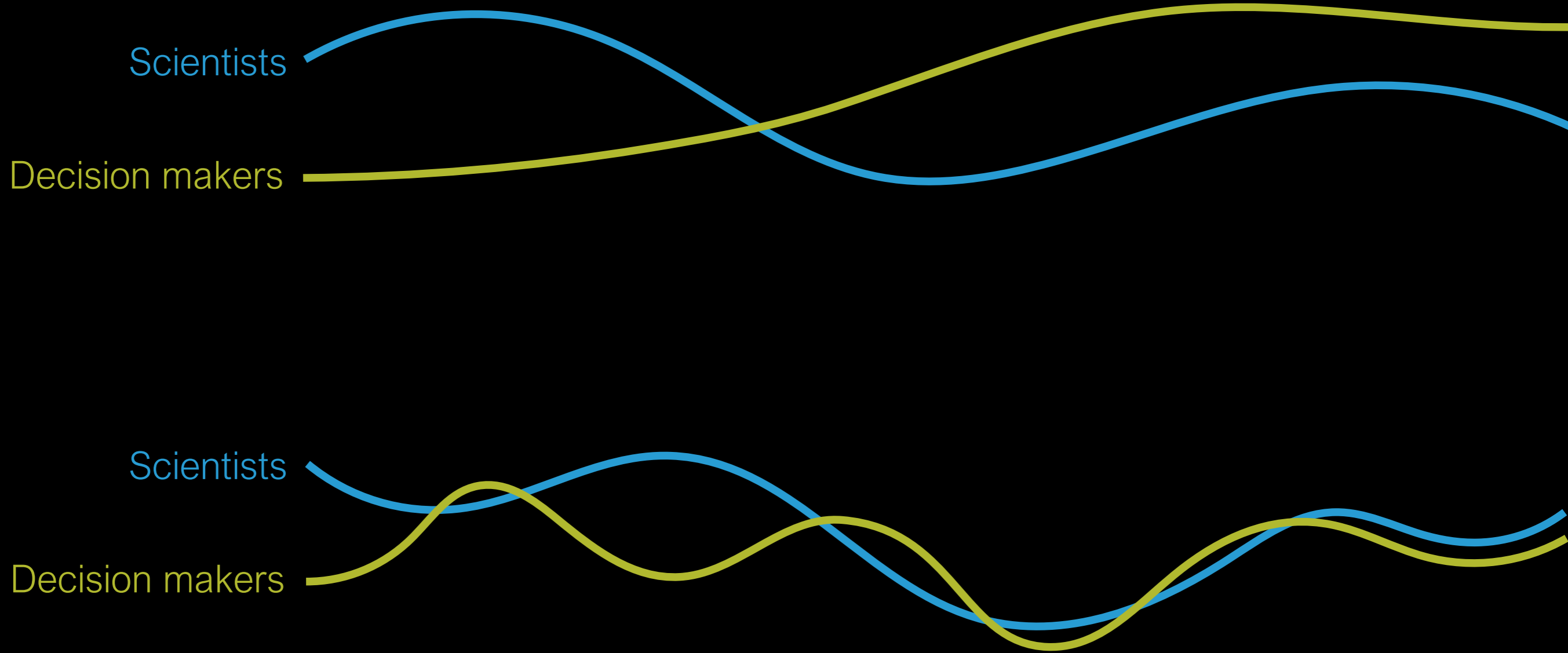
Forum on Natural Capital Accounting for Better Policy Decisions: Taking Stock and Moving Forward

October 2017



Wealth Accounting and the
Valuation of Ecosystem Services
www.wavespartnership.org



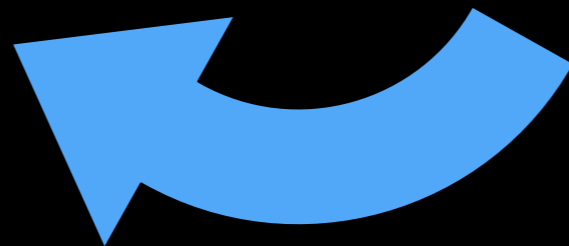
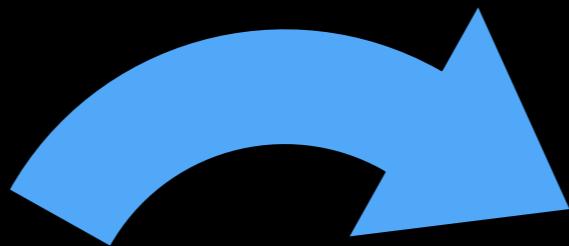


Posner, S., E. McKenzie, T. Ricketts. 2016. Policy Impacts of Ecosystem Services Knowledge. *PNAS*.

McKenzie, E., S. Posner, et al. 2016. Understanding the use of ecosystem services knowledge in decision making. *Environment and Planning C: Government and Policy*, 32: 320-340.

Communication is key







Vardon, M., P. Burnett, and S. Dovers. 2016. "The Accounting Push and the Policy Pull: Balancing Environment and Economic Decisions." *Ecological Economics* 124: 145–52.



City/Regional use of NCA

Weigh the tradeoffs between

efforts to protect/improve
watershed quality

invest in water treatment
facilities

State use of NCA

- See current condition of water resources
- Track the timing, location, and severity of water scarcity
- Evaluate likely consequences of alternative paths forward

Federal use of NCA

- Monitor nonmarket goods and service provided by managed natural resources
- Evaluate an agency's performance or effectiveness
- Include land values in the U.S. balance sheet

Federal *decisions* that could use NCA

Decision type

Example

Planning

Priority setting tools, principles, and guidance, e.g. those used in NEPA evaluations or land use planning

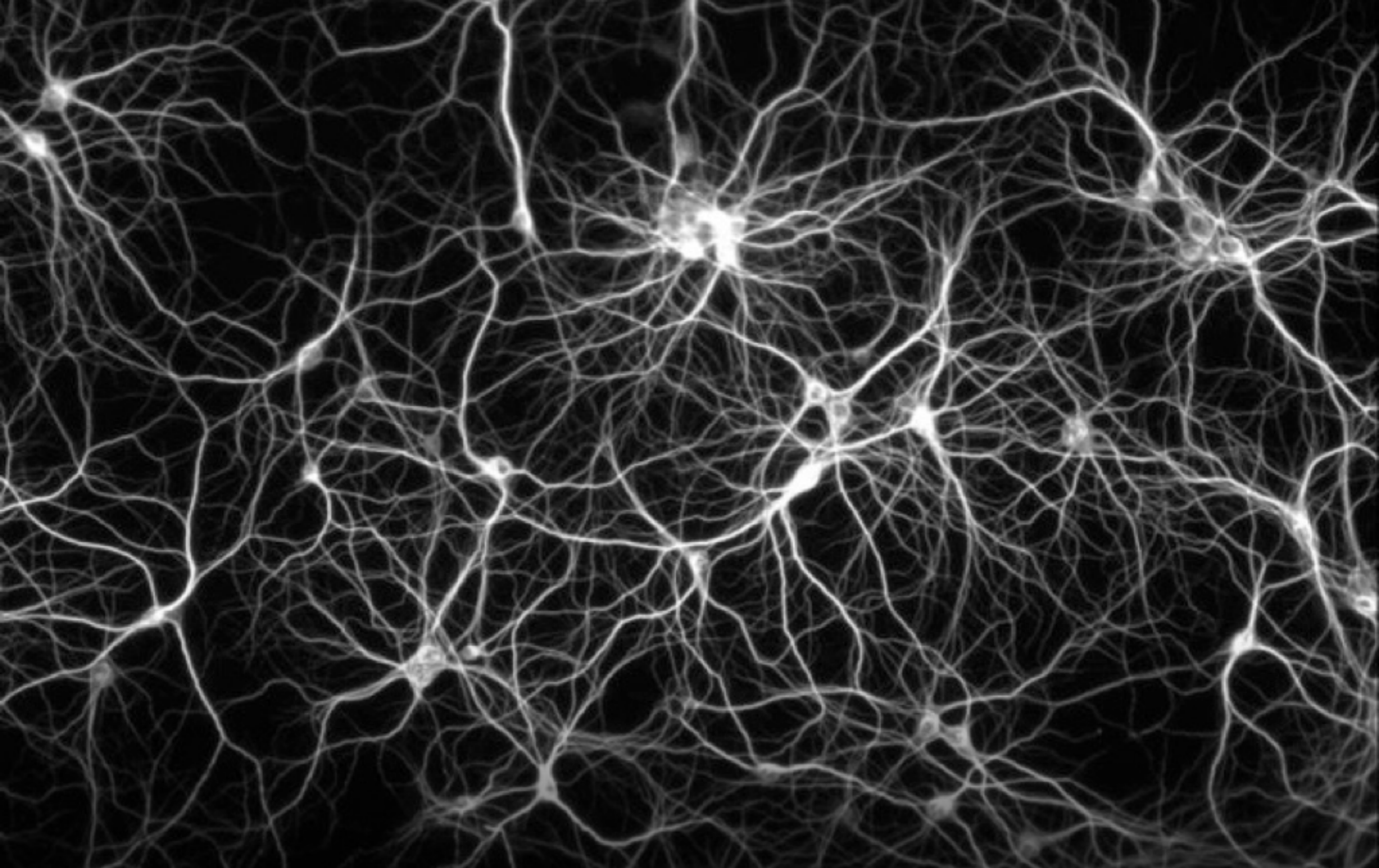
Regulatory

Mitigation and impact reimbursement tools, e.g. wetlands mitigation, natural resource damages mitigation

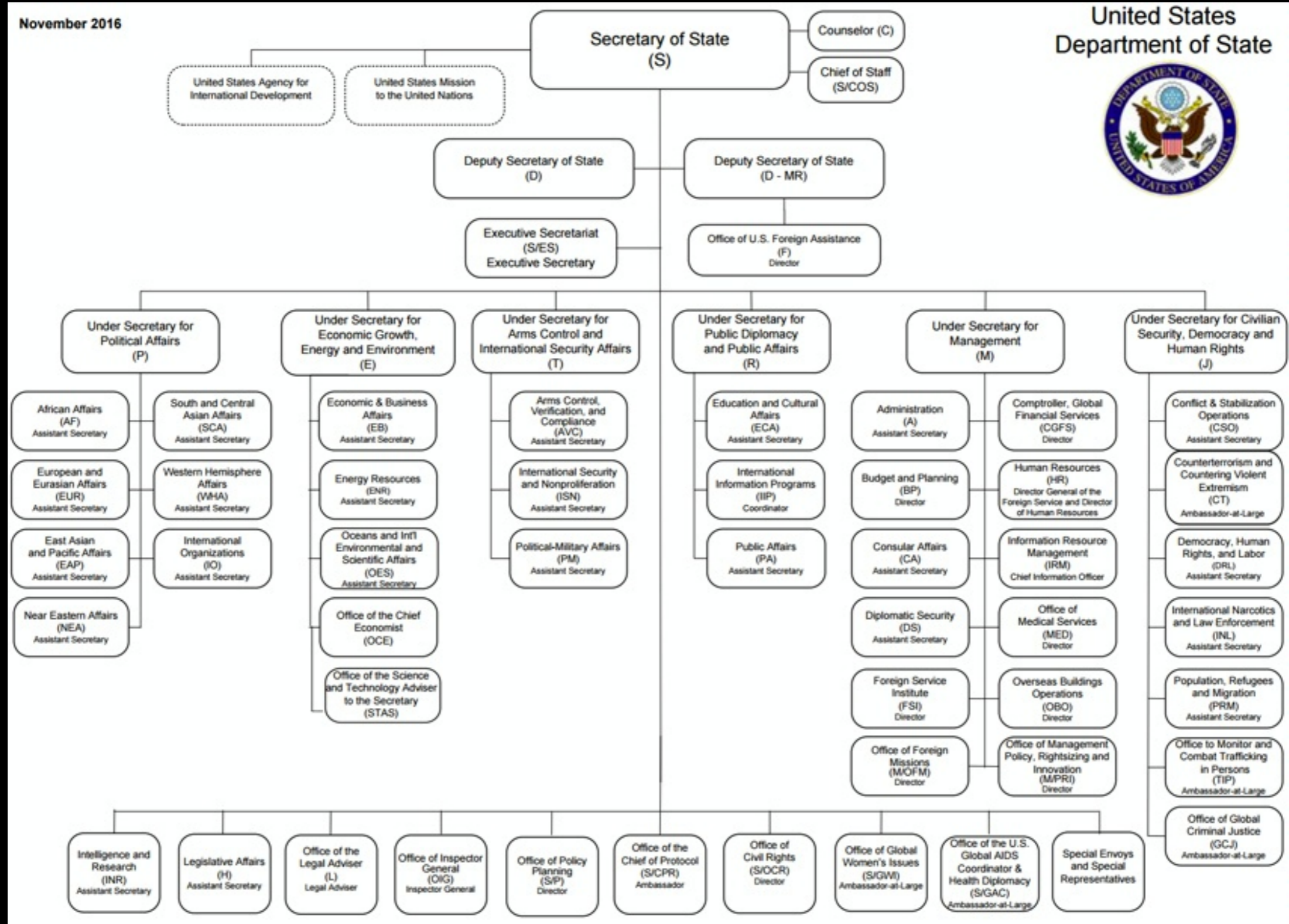
Budgetary

Grants, loans, other investments, e.g. Farm Bill conservation payments, Clean Water Act Revolving Loan Funds





networks & context



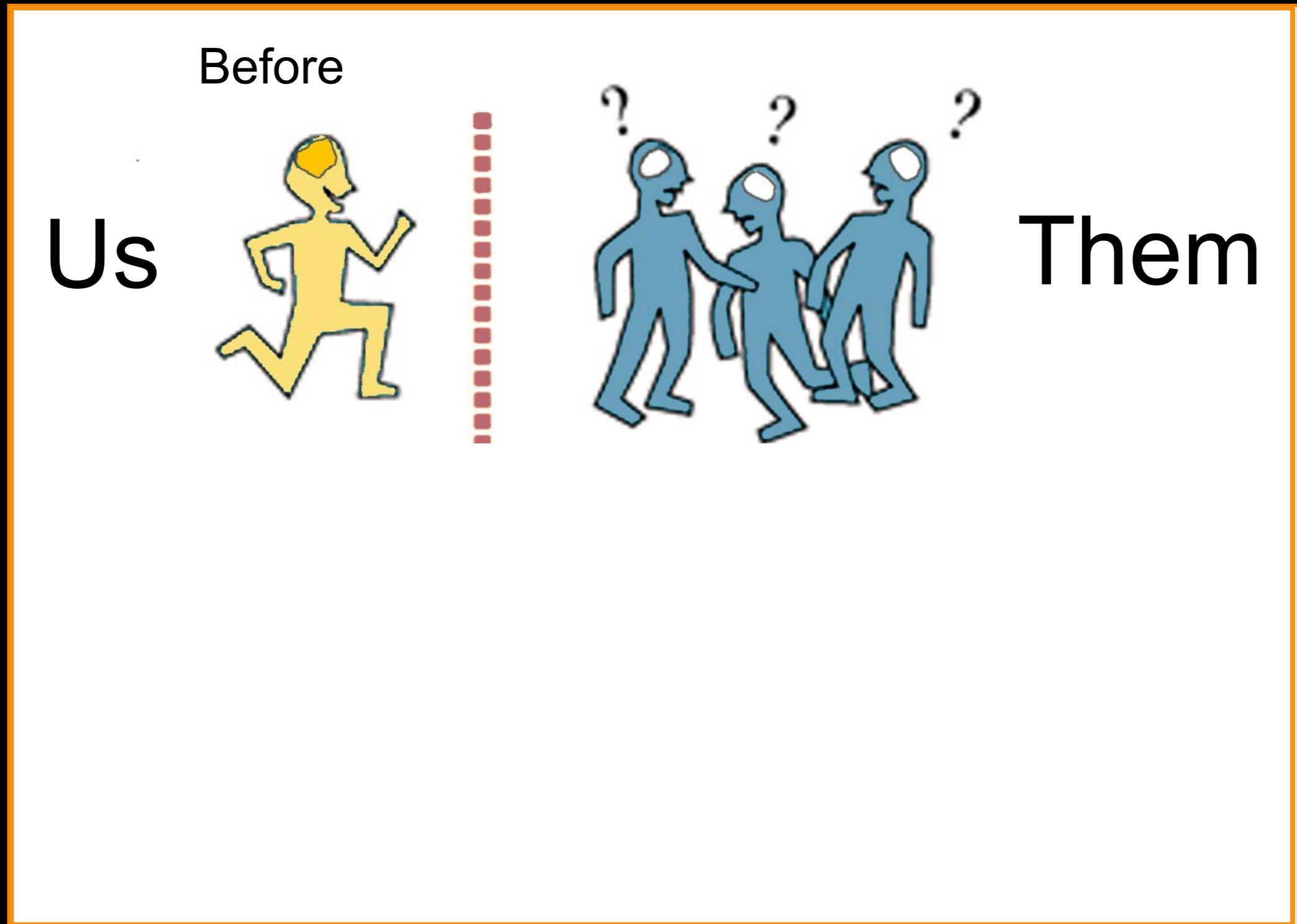
authority & hierarchies



policy windows

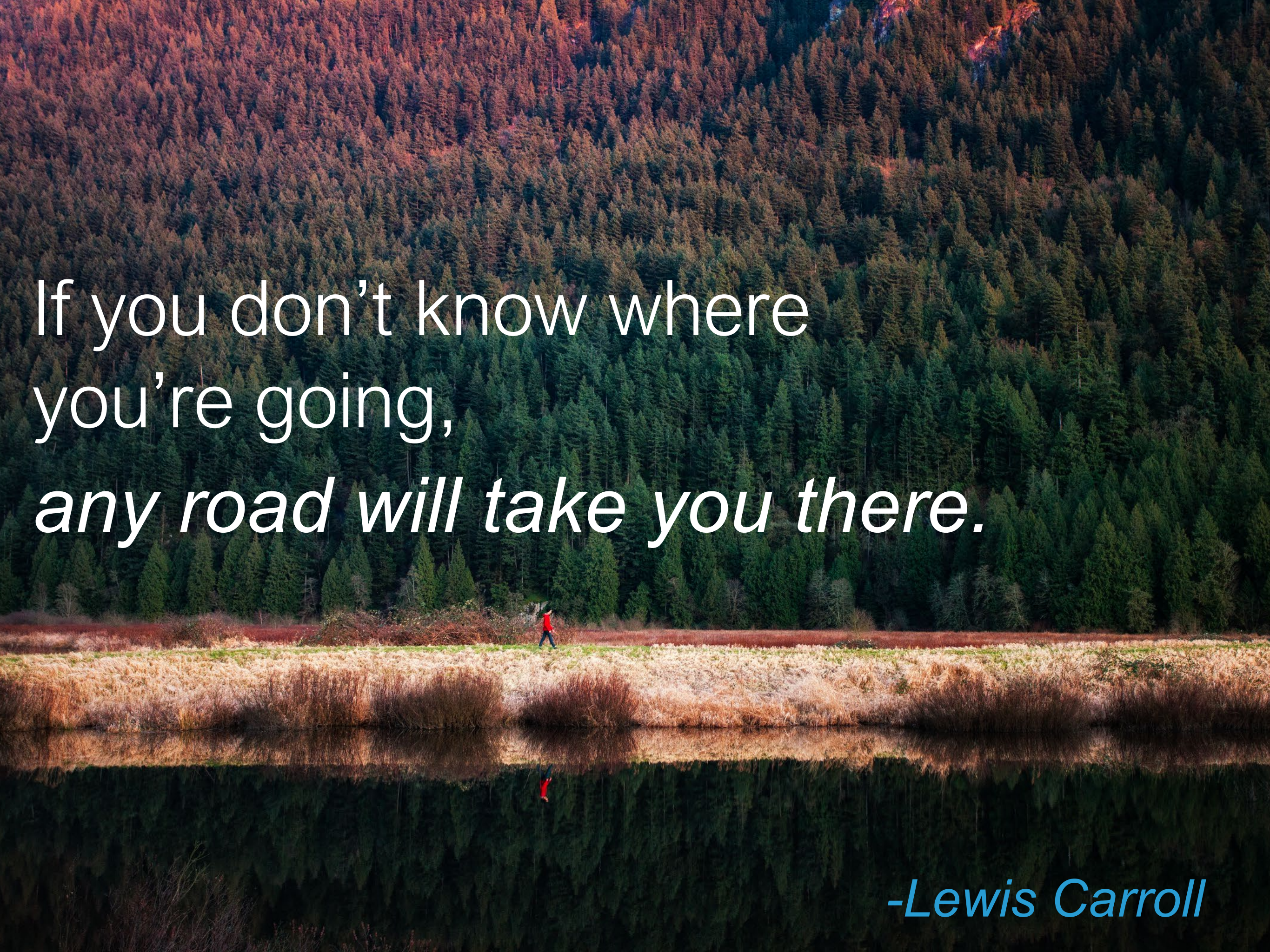
Rose, D.C., et al. In Press. Policy windows for the environment:
Tips for improving the uptake of scientific knowledge. Environmental Science and Policy.

Information is not enough





*"I don't know why I don't care about
Natural Capital Accounting, but I don't."*



If you don't know where
you're going,
any road will take you there.

-Lewis Carroll

NCA work must shift to be *decision-centered*

From...

To...

Technical focus

Decision focus

Supply side

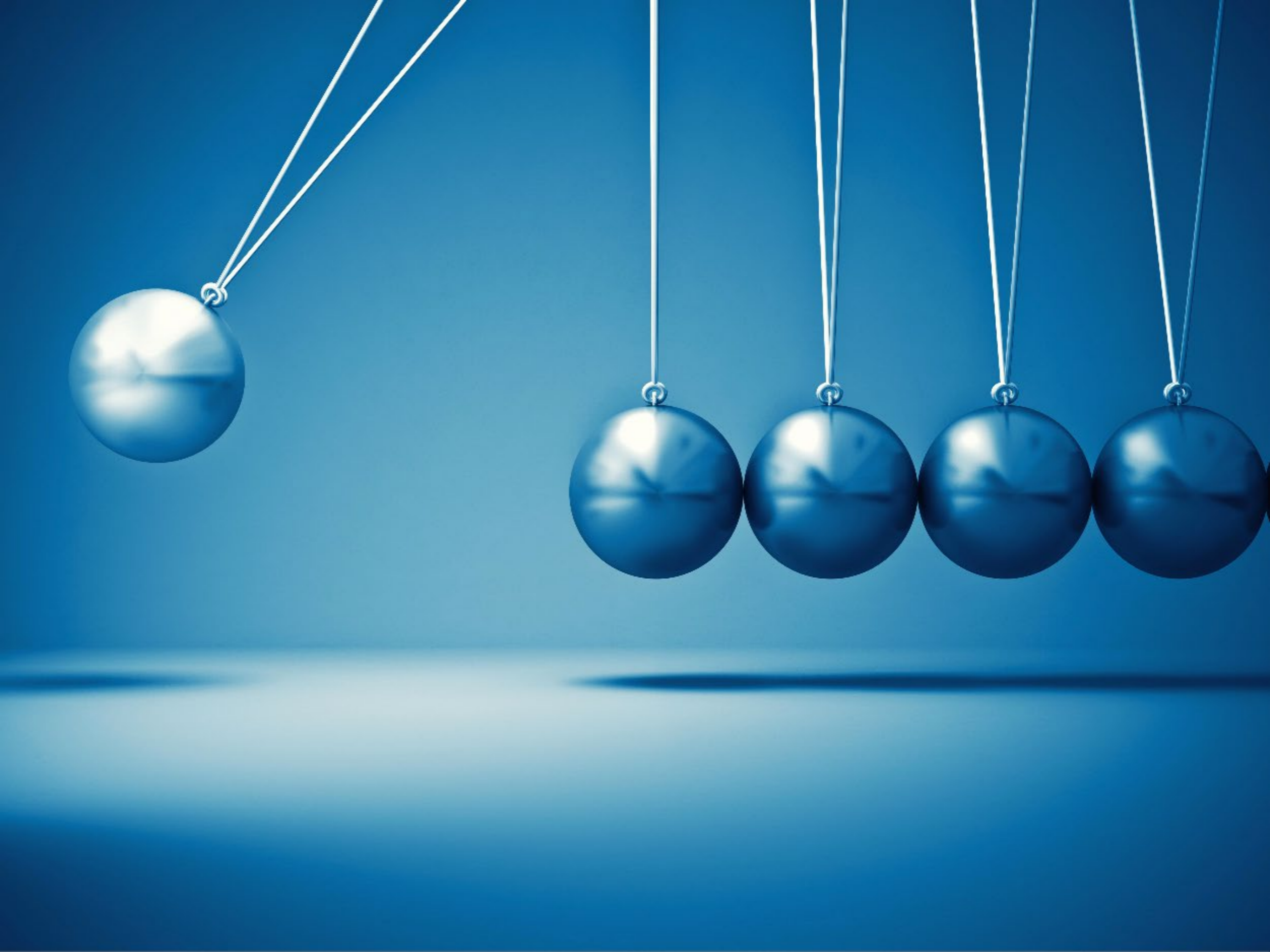
Demand side

Change 1 policy or plan

Enable policy discourse

Experimental

Mandated



Thank you

 @Stephen_Posner

COMPASS





Akerlof, K. 2018. Congress's use of science: Considerations for science organizations in promoting the use of evidence in policy. Washington, DC: American Association for the Advancement of Science.



Policymakers in UK Parliament **use evidence**

- to provide background knowledge
- to enable effective scrutiny
- to provide credibility
- to inform opinions
- to substantiate pre-existing views
- to score political points

Modes of knowledge use

Mode of use

Definition

Instrumental

knowledge flows from scientist to rational decision maker who makes observable decision on technical grounds

Conceptual

knowledge shapes thinking and dialogue, enabling people to develop new beliefs and values

Strategic

knowledge is used to support and promote a specific policy option, or justify previously held beliefs and values

Posner, S., E. McKenzie, T. Ricketts. 2016. Policy Impacts of Ecosystem Services Knowledge. *PNAS*.

McKenzie, E., S. Posner, et al. 2016. Understanding the use of ecosystem services knowledge in decision making. *Environment and Planning C: Government and Policy*, 32: 320-340.